



COMPLAN 2030

THE COMPREHENSIVE PLAN FOR THE CITY OF AUBURN

Public Meeting #2

February 23, 2010



Presentation Summary

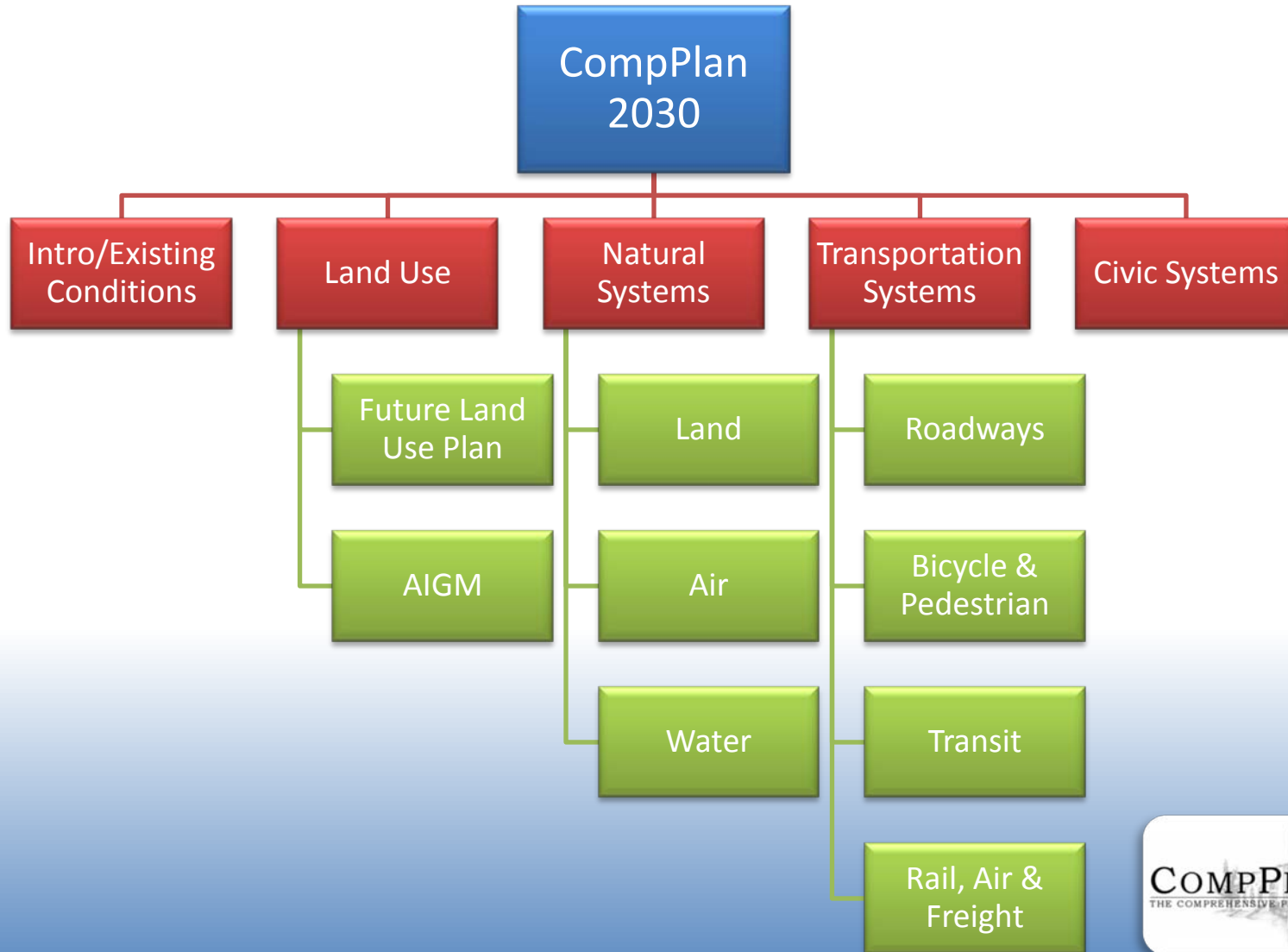
- Refresher: What is CompPlan 2030?
- Forms of input
- Why the CompPlan is important
- What you told us
- Visioning
- Your task tonight

What is CompPlan 2030?

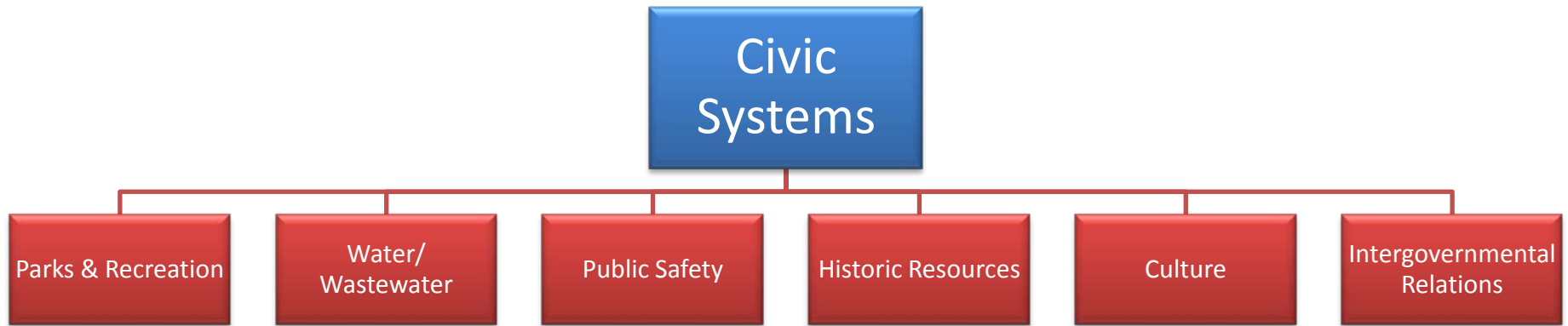
- CompPlan 2030 is the City of Auburn's comprehensive future land use and transportation plan. As a plan, CompPlan 2030:
 - Provides guidance for the City's future growth and development, based on analysis of existing and future conditions, best practices, and Auburn's best vision for itself
 - Gives the aspirations of the community substance and form
 - Provides predictability and fairness for citizens, elected officials, city staff, and the development community
 - Integrates many disparate systems into one harmonious whole



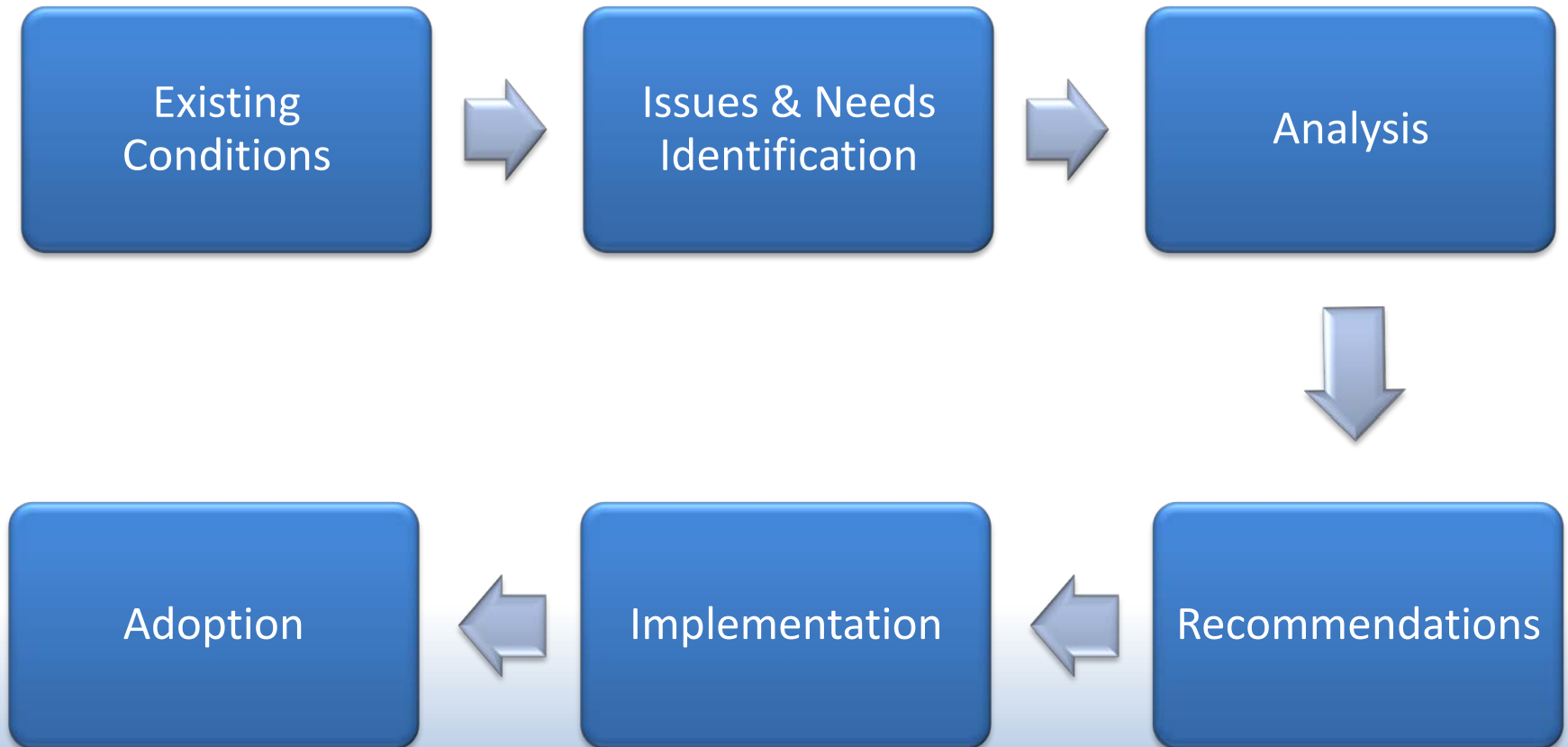
CompPlan 2030 Structure



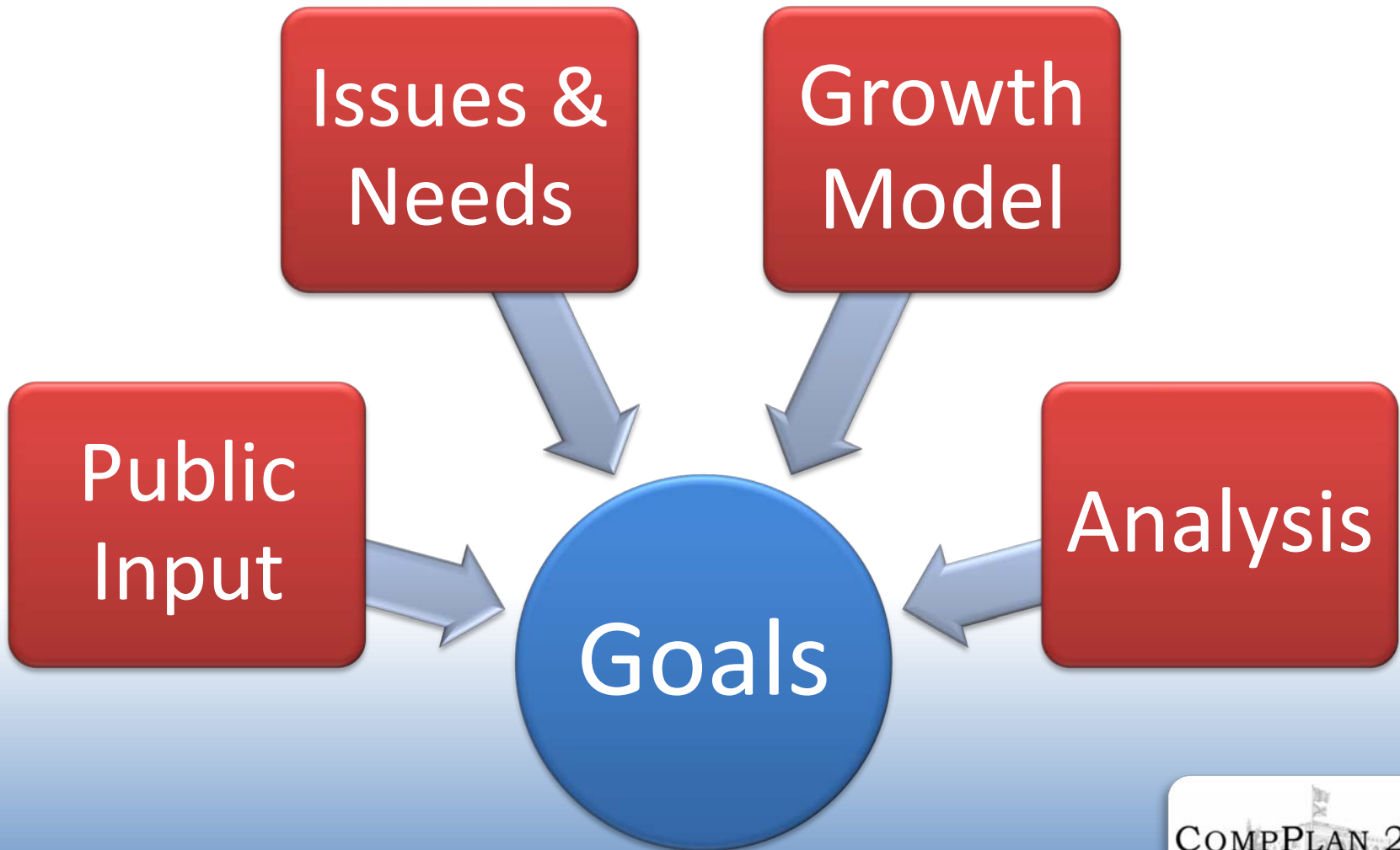
CompPlan 2030 Structure: Civic Systems



The CompPlan Process



Forms of input



Forms of input

Public
Input

- Input was gathered in two public meetings and one focus group of students at Auburn High School
- Over 120 people participated
- Attendees responded to two questions about the future of Auburn and also filled out surveys

Forms of input

Issues & Needs

- Surveys were sent to over 100 stakeholder organizations, from Auburn University to the United Way
- Respondents were asked to evaluate the strengths and weaknesses of their organization in regard to issue areas, such as water quality or transportation
- Responses help with development of lists of issues and needs for each issue area

Forms of input

Growth Model

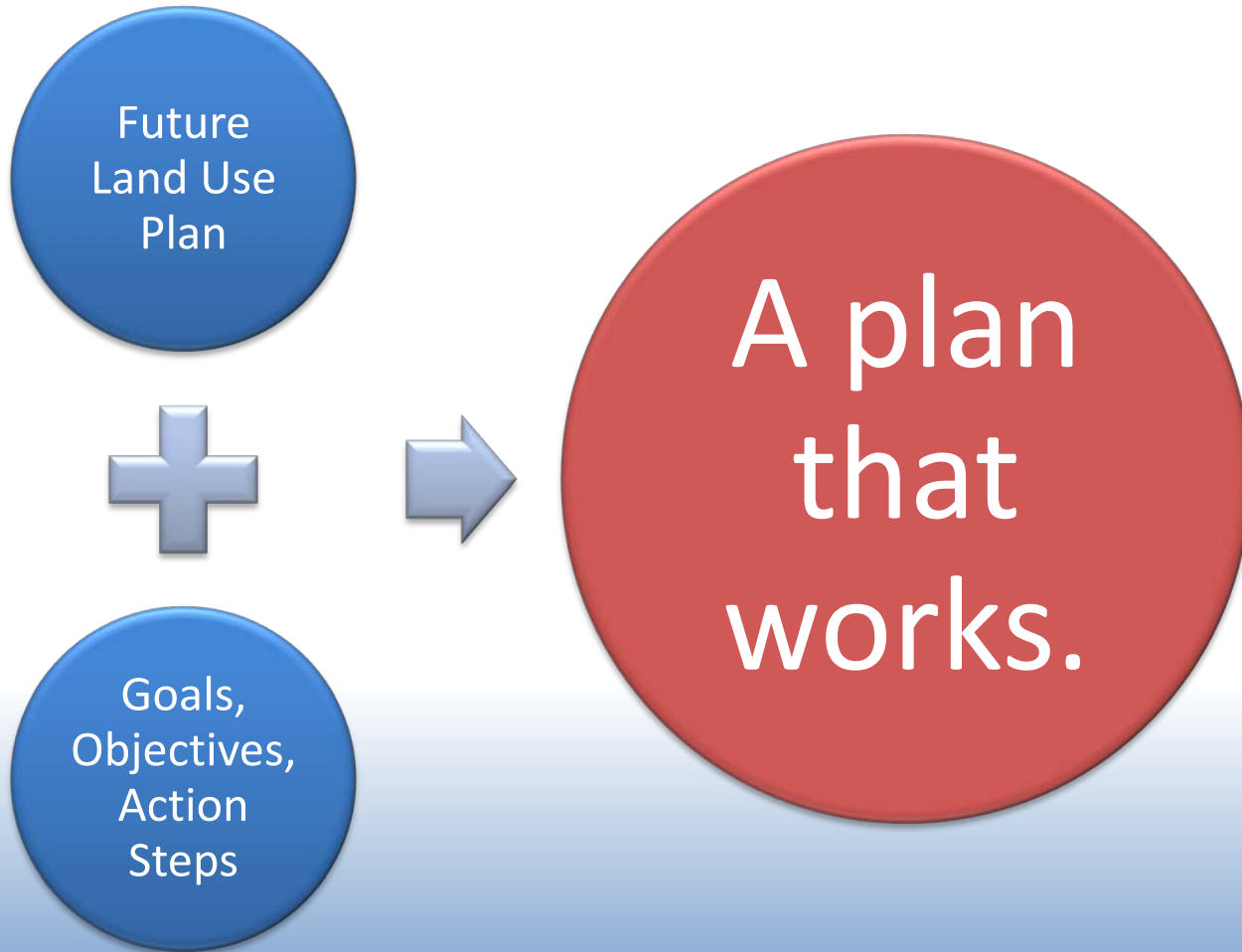
- The Auburn Interactive Growth Model is an analytical tool for predicting the population of Auburn over time
- The model helps us predict the location of future growth based on a variety of factors
- Other components of the model assist predicting desirable future locations for:
 - Schools
 - Parks
 - Commercial Centers
 - Fire Stations

Forms of input

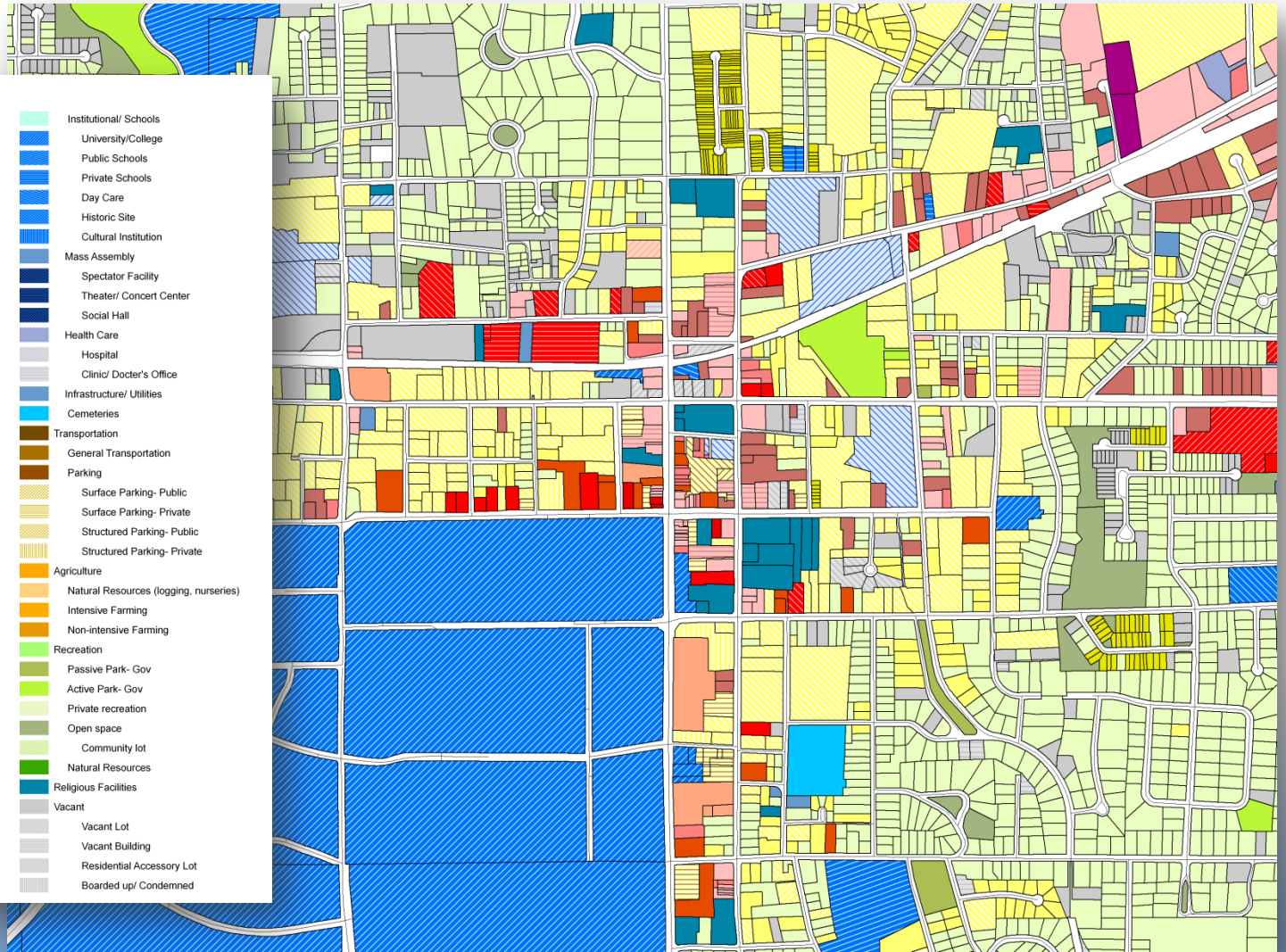
Analysis

- City staff will complete independent analysis of existing conditions, best practices, and other data

Outcomes



Current Land Use

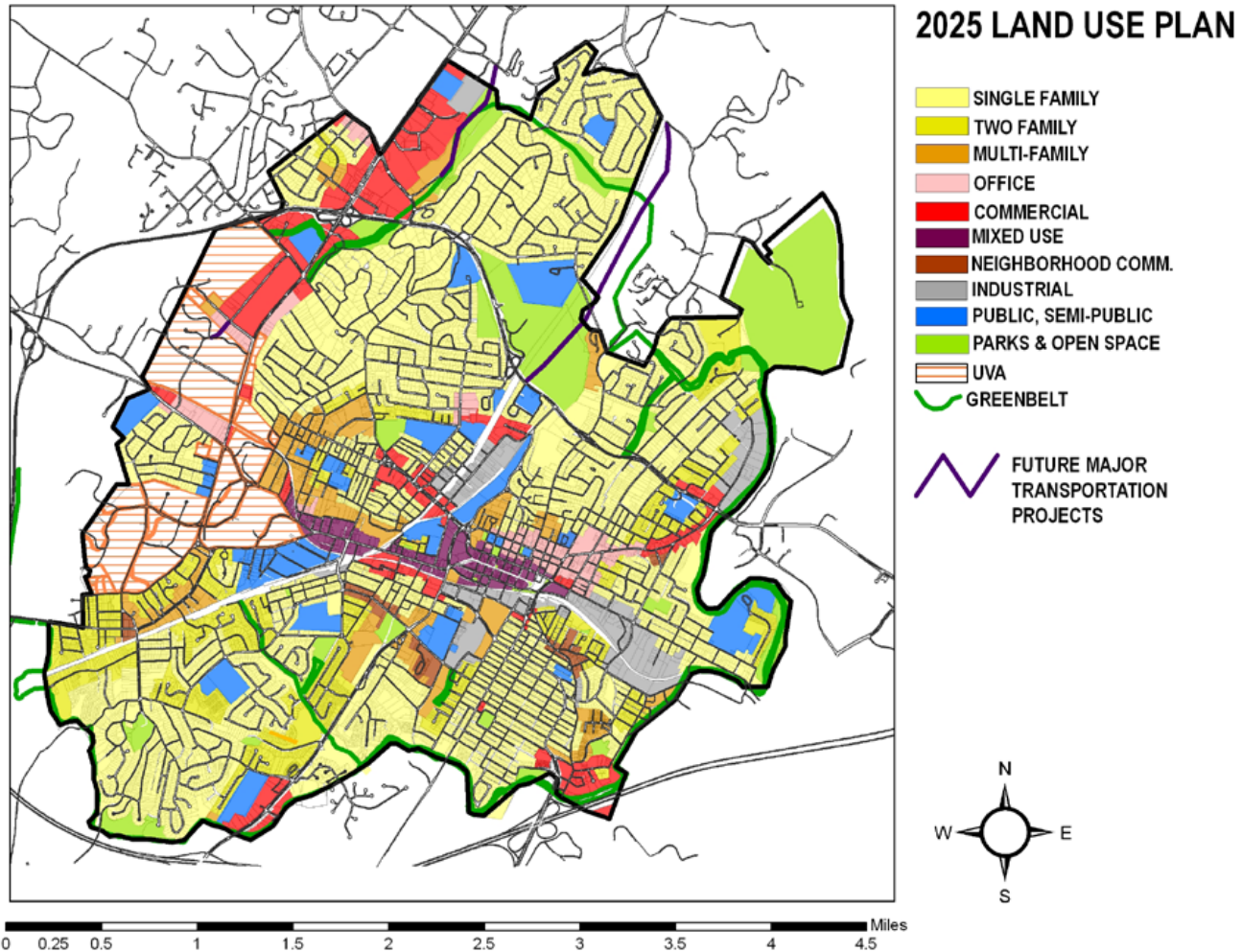


Legend

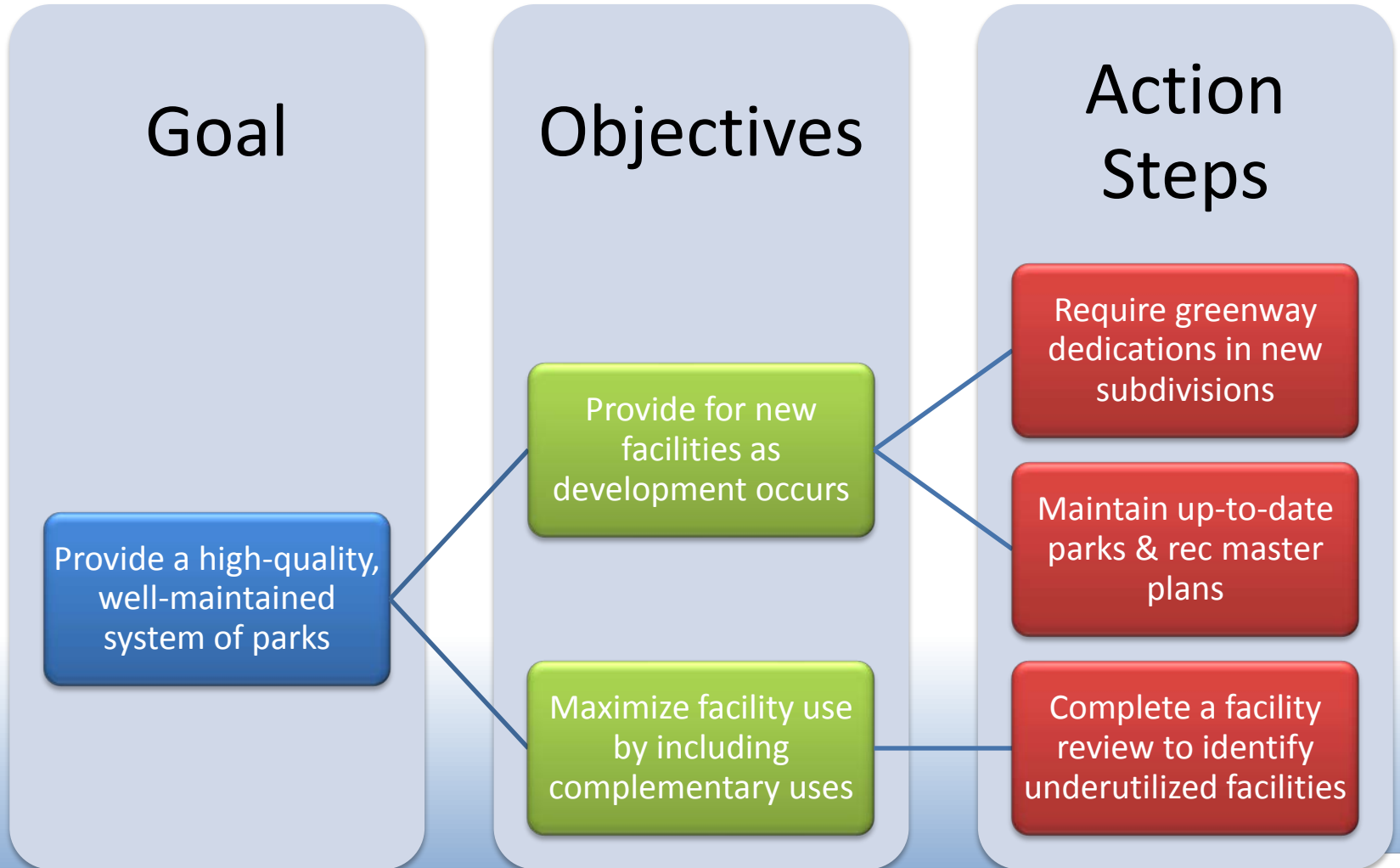
Land Use Sub-Categories Description

- Not Classified
- Residential**
 - Single Unit
 - Duplex
 - Multi-family (> 3 Units)
 - Triplex
 - Quadplex
 - Apartments
 - Condominiums
 - Dormitory (non-campus)
 - Townhouses
 - Group home, retirement
 - Mobile home
 - Mobile home park
- Commercial**
 - General Retail
 - Shopping Center/ Mall
 - Retail Goods
 - Retail Services
 - Restaurants non-fast-food
 - Restaurants fast-food
 - Entertainment/ Lounges/ Clubs
 - Office Activities
 - Office Park
 - Bank
 - Hotel/ Motel/ Bed & Breakfast
 - Bed & Breakfast
 - Mixed-Use Commercial/ Residential
 - Industrial Manufacturing
 - Manufacturing
 - Mixed-Use Fabrication/ Residential
 - Warehouse/ Wholesale/ Storage
 - Mini-warehouse/ Self storage
 - Solid Waste Management
- Government/Social/Institutional**
 - Government
 - Federal
 - State
 - Local
 - Fire Station
 - Institutional/ Schools
 - University/College
 - Public Schools
 - Private Schools
 - Day Care
 - Historic Site
 - Cultural Institution
 - Mass Assembly
 - Spectator Facility
 - Theater/ Concert Center
 - Social Hall
 - Health Care
 - Hospital
 - Clinic/ Doctor's Office
 - Infrastructure/ Utilities
 - Cemeteries
- Transportation**
 - General Transportation
 - Parking
 - Surface Parking- Public
 - Surface Parking- Private
 - Structured Parking- Public
 - Structured Parking- Private
- Agriculture**
 - Natural Resources (logging, nurseries)
 - Intensive Farming
 - Non-intensive Farming
- Recreation**
 - Passive Park- Gov
 - Active Park- Gov
 - Private recreation
 - Open space
 - Community lot
 - Natural Resources
 - Religious Facilities
- Vacant**
 - Vacant Lot
 - Vacant Building
 - Residential Accessory Lot
 - Boarded up/ Condemned

Future Land Use Plan

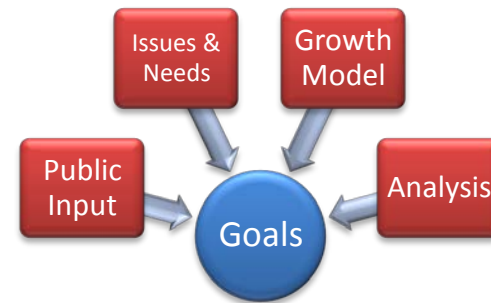


How recommendations work



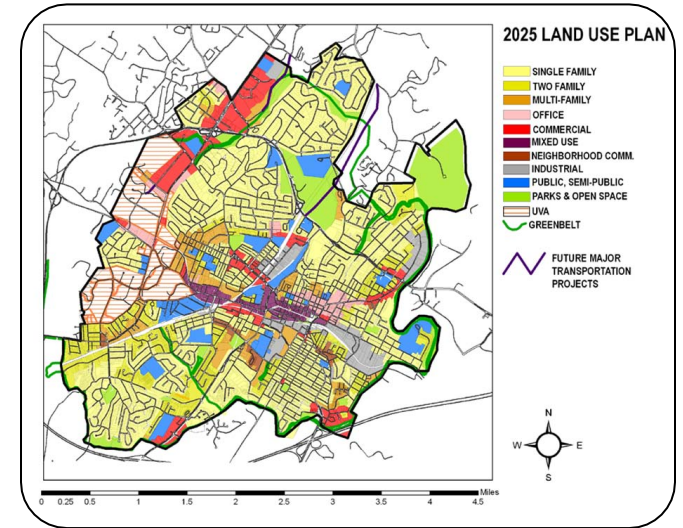
Why CompPlan 2030 is important

- First comprehensive long-range planning effort in Auburn in over a decade
- Plan will use input from diverse sources:
 - The public
 - Stakeholder groups
 - Quantitative data
 - The best practices of planning
- Recommendations will address broad range of subject areas, from land use and transportation to the natural environment and parks



Why CompPlan 2030 is important

- If adopted, the plan will be an official policy document of the City
- Future land use plan will help determine the type, location, and scale of new development and associated improvements for the next 20 years
- Recommendations may result in substantial changes to zoning ordinance and subdivision regulations, as well as City-initiated rezoning



Why CompPlan 2030 is important

- The plan coordinates and unifies the dozens of existing plans and other documents that currently guide the City of Auburn.
- Fundamentally, CompPlan 2030 is a plan about good growth. Auburn is a fast-growing community that faces many challenges in the days and years ahead. Because we know we will grow, the question must become: how do we grow, and how do we do it well?

What you told us

- Input was gathered in two public meetings and one focus group of students at Auburn High School
- Over 120 people participated
- Groups were asked to respond to two statements/questions:
 - Imagine the best possible Auburn in the year 2030. Describe one aspect of it.
 - What challenges must Auburn address between now and 2030 to become the best possible place it can be?

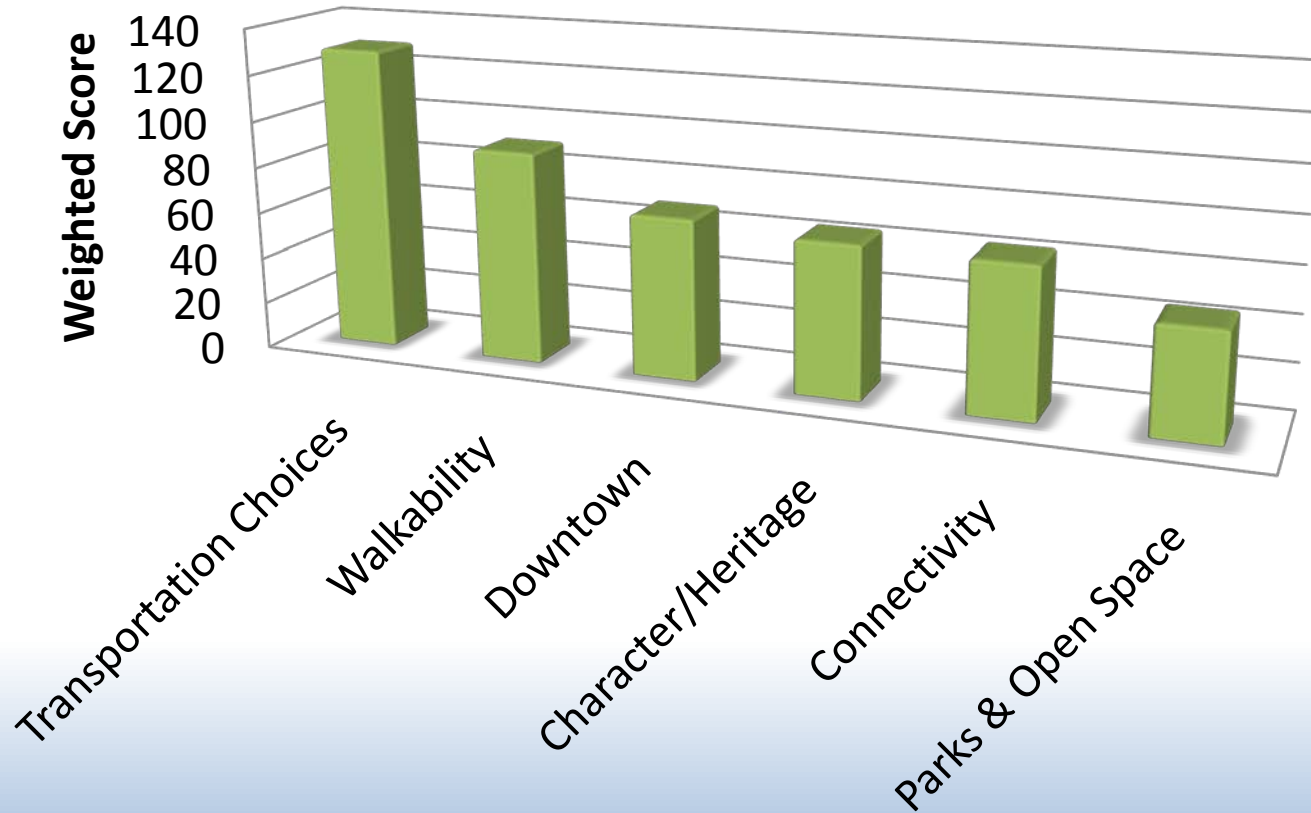


Imagining the best possible Auburn

Responses were divided into categories:

Airport	Health	Parks & Open Space	Sustainability
Arts	Housing	Redevelopment	Transportation Choices
Character/Heritage	Jobs	Schools & Education	Trees
City Services	Local Businesses	Seniors	University
Connectivity	Mixed-Uses	Streets/Traffic	Utilities
Downtown	Neighborhood Commercial	Students	Walkability
Entertainment/ Recreation	Other		

Top 6 Categories



Transportation Choices

- Build a network of on- and off-street paths for pedestrians and bicycles that connect the places we live, work, learn, and play [56]
- Provide a viable mass transit system that is a functional alternative to car use [53]
- Limit car use in some areas [9]



Walkability

- Provide a more walkable city with a walkable downtown, sidewalks and streets that are safe for pedestrians, and greenways that connect everyday destinations and provide opportunities for interaction between people [88]

Downtown

- Provide a vibrant, expanded downtown with green space, public gathering spaces, and a mix of uses oriented toward pedestrians [40]
- Protect Auburn's historic downtown and college town atmosphere [18]
- Limit the height of downtown buildings [4]
- Acquire the downtown Baptist church for a park or downtown square [4]



Character/Heritage

- Protect Auburn's historic downtown and college town atmosphere [18]
- Promote village/small town feel [17]
- Promote local businesses [11]
- Provide a livable city that is welcoming to all people [6]
- Preserve historic buildings and neighborhoods [5]
- Protect and maintain walkable neighborhoods near downtown and Auburn University [4]

Connectivity

- Provide connections between different forms of transportation (bicycle and pedestrian paths, the mass transit system, roadways) and destinations (homes, businesses, schools, parks) [50]
- Provide a connected network of greenways and parks that offer bike, pedestrian, and water recreation opportunities [14]



Parks & Open Space

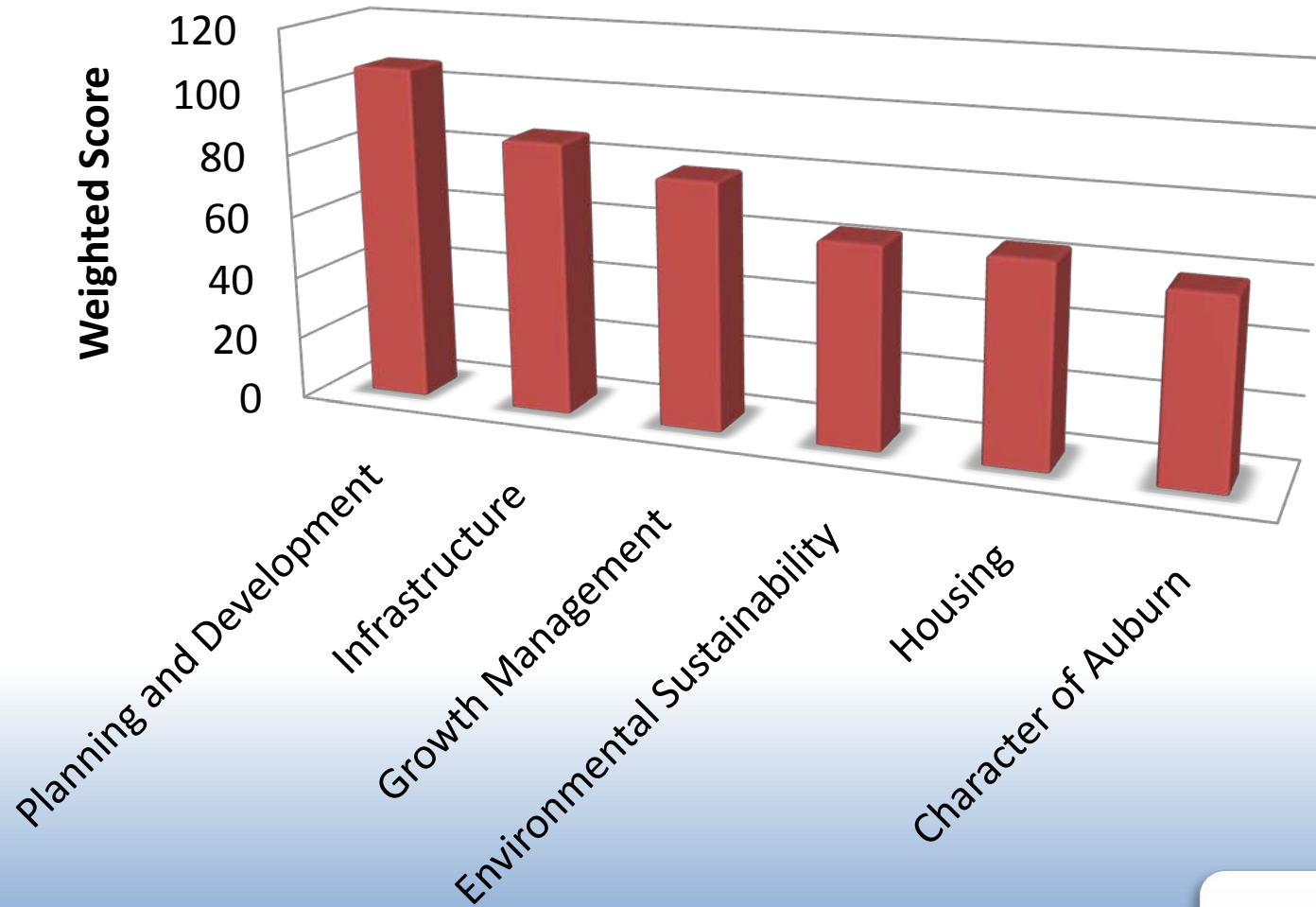
- Preserve and expand green space [19]
- Provide a connected network of greenways and parks that offer bike, pedestrian, and water recreation opportunities [14]
- Incorporate green space into downtown [9]
- Provide more diverse recreational facilities [2]

What challenges will face Auburn in 2030?

Responses were divided into categories:

Planning and Development	Housing
Growth Management	Anticipated Development Projects
Infrastructure	Reliance on Local Resources
Environmental and Overall Sustainability	Education
Increase Citizen Participation	Infill Development and Revitalization
Economic Sustainability	Governmental Reform
Transportation	Public Awareness
Character of Auburn	Social Activities
Accountability	Other
City Budgeting Efficiency	

Top 6 Categories



Planning & Development

- Making infill development happen [10]
- Holding developers responsible; make them stick to the plan [9]
- Infill and redevelopment to better use lands already in use [8]
- The city should make equal efforts to improve and maintain ALL neighborhoods and areas [8]
- Create public spaces in high density population areas like in Savannah, GA [6]
- Auburn University's plans (collaboration with city) [5]

Infrastructure

- Infrastructure [8]
- Infill and redevelopment to better use lands already in use [8]
- Expansion and revitalization of existing pedestrian infrastructure & associated funding challenges [5]
- Thin density of traffic by offering more traffic corridors and keeping lanes consistent, make it easier to get through town [4]



Growth Management

- As Auburn grows, will there be adequate school facilities? [8]
- Subdivisions gone wild/ oversupply of subdivisions. Not using existing buildings, "too much out with the old" - Smart Growth. [6]
- Occupancy of existing apartments before new ones are built [5]
- Where are future sources of water? [4]
- Maintain green space so it is not be lost by 2030 [4]

Environmental Sustainability

- Infill development/ redevelopment [19]
- Take time to fix and maintain what the city already has instead of always building new [8]
- To use water and energy resources sustainably [7]
- Expansion and revitalization of existing pedestrian infrastructure & associated funding challenges [6]
- Poverty and pollution [6]



Housing

- Keep old Auburn feeling in residential neighborhoods [10]
- Affordable housing [8]
- Control University and student housing sprawl [6]
- Need housing assistance/maintenance programs/grants [5]
- Free housing should require more from those receiving the benefits [5]

Character of Auburn

- Focus more on citizens, not as much on the university [9]
- Maintaining green space [8]
- Maintaining small-town feel [7]
- Crime - keep the city as safe as possible as it grows [4]
- Keep character of Auburn by careful & frequent updates of existing subdivision regulations and Zoning. Healthy feedback. [3]



The importance of a vision

- Great places are not created by accident
- The things we love about places we visit do not have to be exclusive to those places
- Communities make choices everyday about the type of places they will become
- Choices are incremental; it is not always clear what impact a single decision will have
- Many decisions made over time lead us to where we are and will be in the future



The importance of a vision

- Visioning is the act of anticipating that which will or may come to be
- A clearly articulated vision about the kind of community we want to be provides us with a roadmap to our destination
- Without a vision, we lack the guidance we need to ensure our incremental choices create the final result we desire
- A vision is not a guarantee of what we will become; it only helps us get there



Drafting a vision statement

- Eleven draft vision statements were drafted by Planning staff that reflect the top categories for responses
- The purpose of the statements is to help set an overall strategic direction for the plan; they are not meant to summarize all input received
- All input will still be used in individual sections where possible


Your task tonight


- The meeting is an open house format
- Draft vision statements have been placed around the cafeteria
- You will be given a set of post-it notes
- As you read the vision statements, write your thoughts on the post-it notes, and place them on each vision statement

PROVIDE A VIBRANT, EXPANDED DOWNTOWN WITH GREEN SPACE, PUBLIC GATHERING SPACES, AND A MIX OF USES ORIENTED TOWARD PEDESTRIANS

Please write your thoughts, ideas and suggestions on a sticky note and place them in the space provided.

Thank You



 **COMPPLAN 2030**
THE COMPREHENSIVE PLAN FOR THE CITY OF AUBURN

AUBURN JUNIOR HIGH SCHOOL | FEBRUARY 23, 2010

Your task tonight

- We will use your responses to revise the vision statements
- Your input is important and vital to the success of the plan
- If you have a current, specific concern (i.e. speeding on your street, you experience flooding when it rains), please ask for a **citizen concern form** and turn it in at the front table when you leave
- If you do not have time to participate in the open house tonight, check the City's website starting Thursday for an online response form

Meeting Schedule

Meeting Name	Date/Frequency
Planning Commission Work Session	Monthly starting 2010
Public Meeting #1	October 13, 2009
Joint Planning Commission/Council Meeting	November 10, 2009
Northwest Auburn Meeting	February 9, 2010
Public Meeting #2	February 23, 2010
Joint Planning Commission/Council Meeting	March 30, 2010
Public Meeting #3	October 2010
Joint Planning Commission/Council Meeting	October 2010
Planning Commission Adoption	December 2010
City Council Adoption	January 2011

For more information:

- Call Justin Steinmann at **334-501-3045**
- Visit the CompPlan 2030 website at:
www.auburnalabama.org/compplan2030